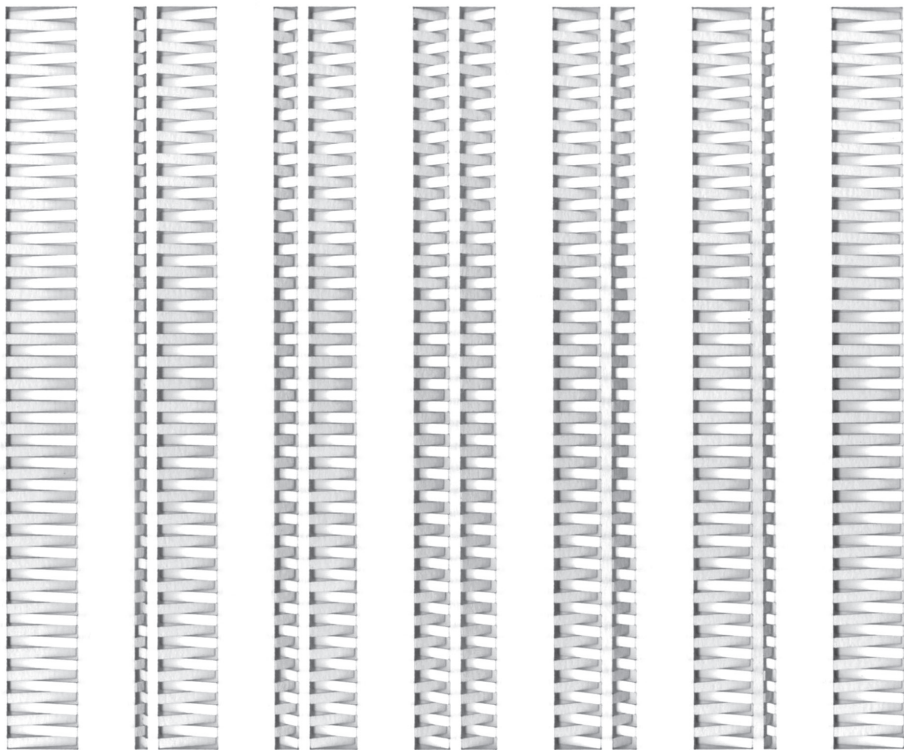




KATHERINE MAGINNIS
in association with
WIMBLEDON FINE ART

Toni Davey
Private View Sunday 6th May 2012
Champagne 12.00 – 3.30pm

Exhibition continues: 6th–16th May 10.30am – 6.00pm



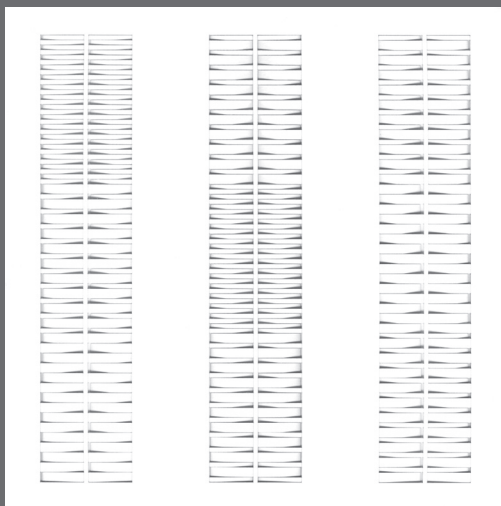
Fall, 2011. 51 x 55 cm Laser cut paper sculpture



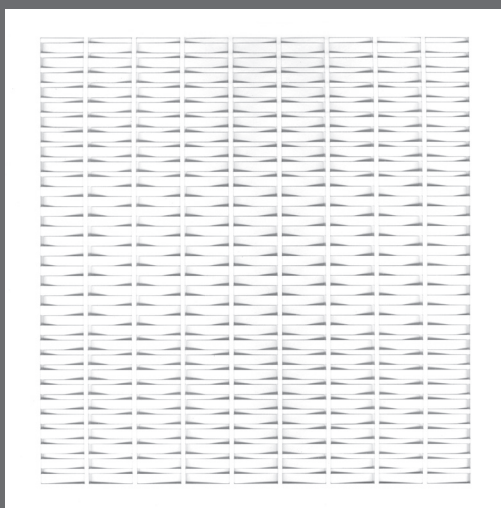
KATHERINE MAGINNIS

in association with

WIMBLEDON FINE ART



Chant 1 to 3, 2011. 51 x 55 cm Laser cut paper sculpture



Chant 3, 2011. 51 x 55 cm Laser cut paper sculpture

Toni Davey studied Fine Art at Hornsey College of Art where she obtained a BA (Hons) followed by an MA in Sculpture from Chelsea College of Art. Whilst working as an Artist and visiting college lecturer in London, Davey gained experience as an architectural model maker which had a decisive influence on her thinking about sculpture.

Davey's paper sculptures come to life through the carefully controlled cutting and manipulation of the surface, creating a three dimensional structure from a flat two dimensional plane. In the work the underlying structure of the grid is always present.

The grid offers the means to retrace one's footsteps, to understand the journey and to allow forms to follow a rule or sequence of changes: 'To draw, to cut, to score, to fold, two dimensions into three: manipulating light and shadow. The surface evolves'.

Davey's recent work using a laser cutter, has opened many new possibilities in terms of scale, intricacy and the ability to produce editions where each identical piece can be individually manipulated to reveal itself in a multitude of ways.

In the burnt drawings, the marks made are in the paper, not on the surface. The burnt lines penetrate and often break the surface in a delicate balance of creation and destruction.

Contact Katherine Maginnis: 020 3501 1570

kate@katherinemaginnis.com www.katherinemaginnis.com

Wimbledon Fine Art 41 Church Road Wimbledon Village London SW19 5DQ

May 3 – 16 2012 10.30am – 6pm